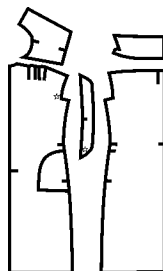
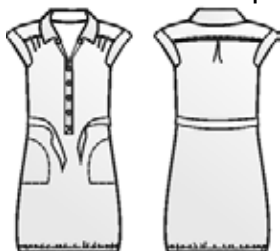


4619 Shirt dress

Sizes 36 – 44 46??

Sizes 31 – 35 on pattern sheet xv



Materials

- 1.5 – 1.6 m printed fabric, 145 cm wide (Trend Stoff)
- 0.4 m fine berry-coloured cotton
- 4 - 5 buttons (Union Knopf)
- 16 - 20 cm bias binding for bottom edge of armholes
- Approx. 95 - 106 cm elastic, 2 cm wide
- Vilene for collar and facing sections
- BERNINA sewing computer
- Edgestitch foot no. 10

Cutting out printed fabric

31 1 x front to fabric fold

32 1 x back to fabric fold

33 2 x yoke to fabric fold

35 1 x collar to fabric fold

1 tie belt: 5 x 145 cm, 2 belt loops: 2 x 12 cm (finished width 1 cm).

Cutting out berry-coloured fabric

34 4 x sleeve facing

35 1 x collar to fabric fold

Button band 5.6 cm x 95 – 105 cm long (finished width 2.8 cm). Tie belt: 5 x 145 cm.

Instructions

1. Work button tape like a simple sleeve vent in a blouse: Mark centre-front and vent end. Iron a bit of Vilene over the vent end from the wrong side. Make the cut on the left-hand side of the front, 14 mm from the centre-front down to the cross-mark. Pull vent straight and edgestitch right sides together to the facing strip. Stitch the vent end, catching as little seam allowance of the outer fabric as possible. Iron seam allowances into the facing. Place free edge of facing over the seam; turn under and sew from the right side. Lay right side to be the overlay, wrong side to be the underlap. Stitch vent end together crossways.
2. Make pleats on front and back. With right sides facing, pin outer yoke on the front sides to the front section. Pin right side of inner yoke to wrong side of edge. Sew front section between the yoke sections and topstitch. Sew outside yoke on in the same way on the back section. Turn under seam allowances on the inner edge of the yoke and stitch down from the right side.
3. Sew belt and topstitch. Sew belt loops and pin, held together, to the side seam at waist height.

4. With right sides together, stitch sleeve facings on the outside curves and turn. Bind bottom edge of armhole with a bias strip and topstitch. Clip seam allowances in the corners up to the stitching (be careful not to cut the stitches). Stitch right side of sleeve facing to wrong side of armhole. Lay facing outwards. Topstitch fold edge.
5. With right sides together, stitch collar together along the outside edges and turn. Sew under collar to neckline with right sides facing. Turn under seam allowance of upper collar and stitch in the ditch from outside. Topstitch collar.
6. Sew hem, leaving an opening for the elastic. Topstitch bottom edge of hem approx. 2 mm. Pull through elastic, sew together, and close hem opening.