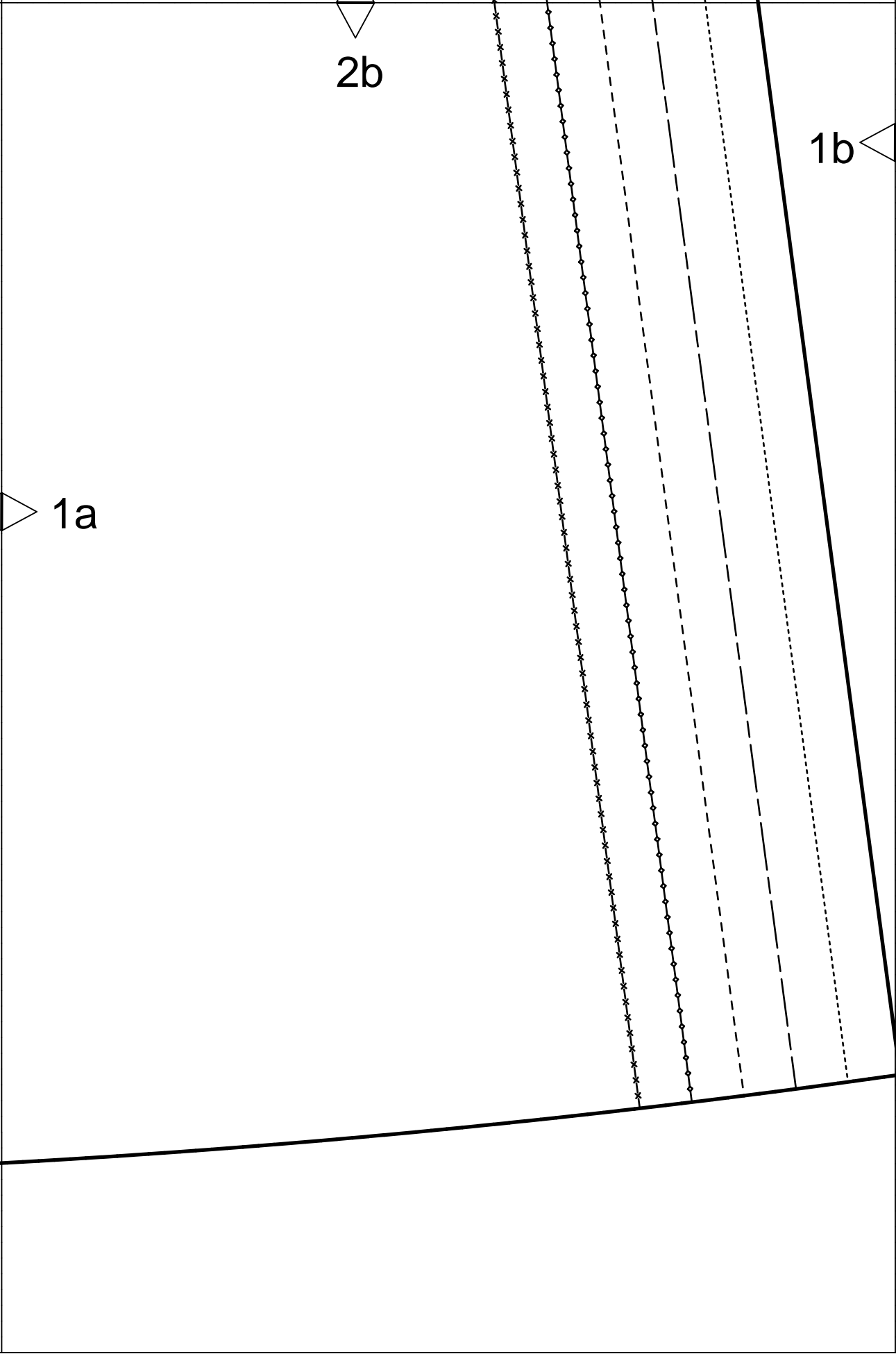
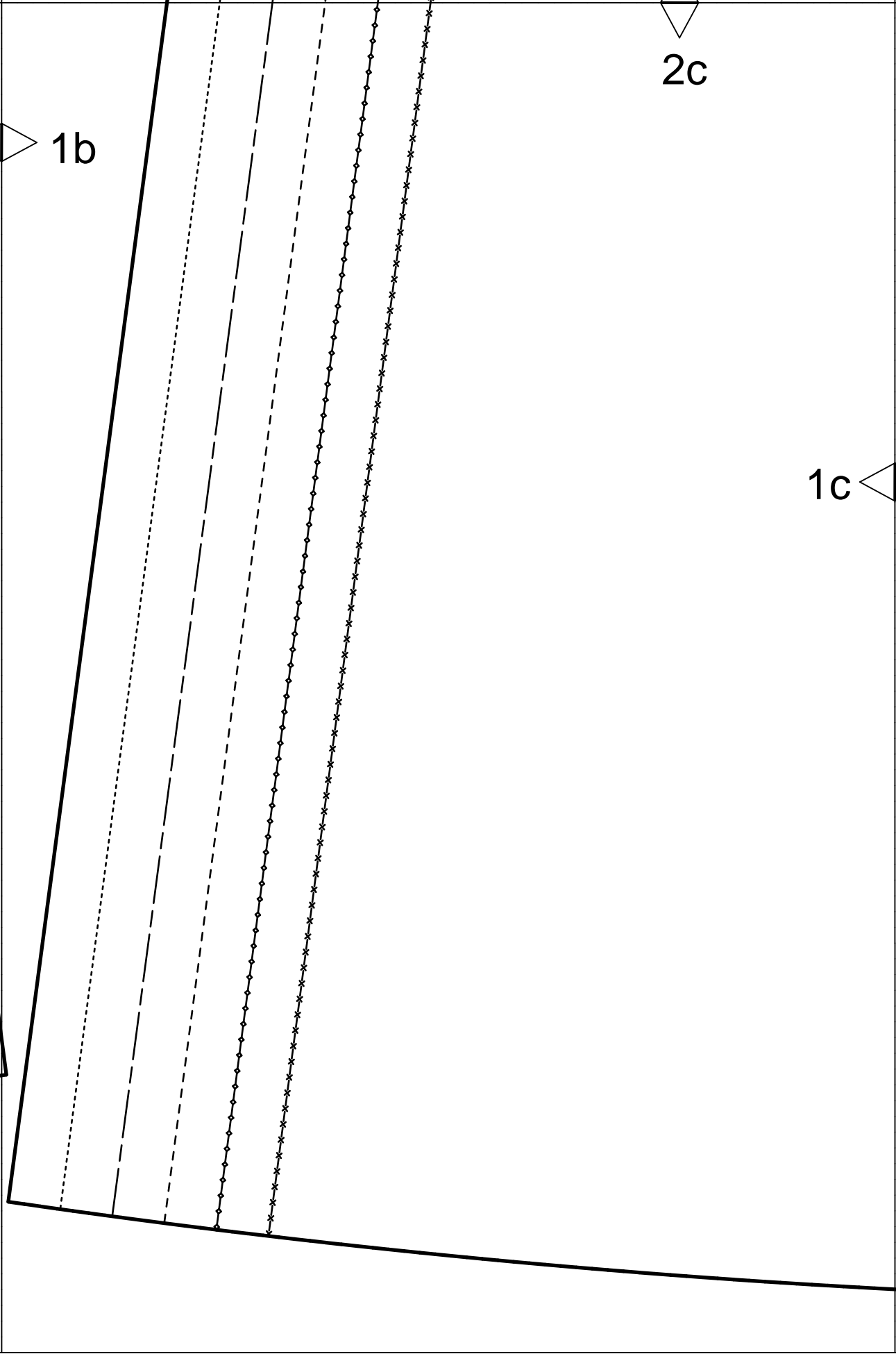


2a

1a

4







2d



1c

2

4a



44

34

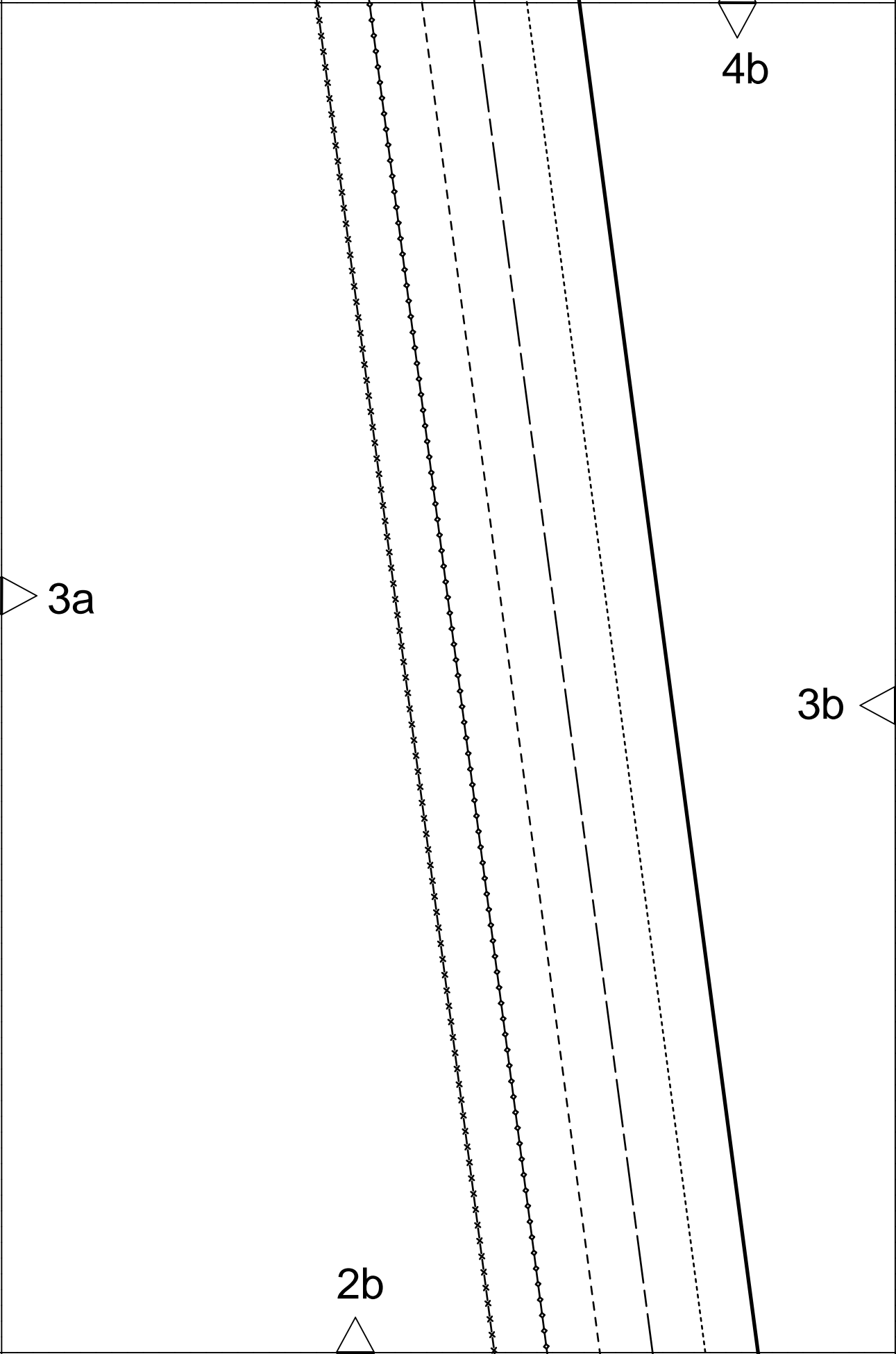
rückwärtige Mitte Naht Fadenlauf
center back seam straight grain
ЗАДНЯЯ СЕРЕДИНА ШОВ ДОЛЕВАЯ НИТЬ

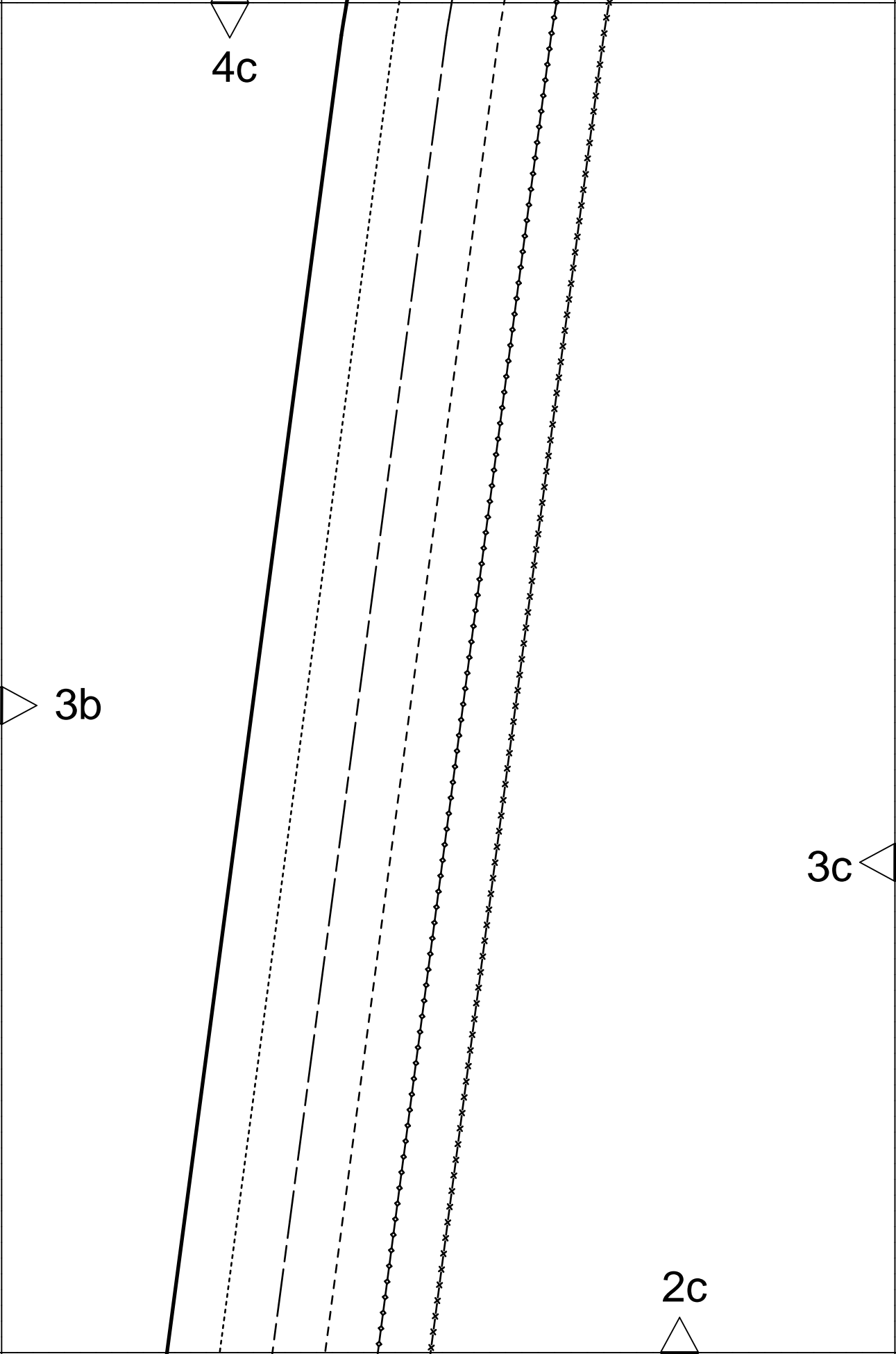
3a



2a









4d



3c

2d



vordere Mitte Stoffbruch Fadenlauf
center front fold straight grain
ЛИНИЯ СЕРЕДИНЫ ПЕРЕДА СГИБ ДОЛЕВАЯ НИТЬ

6a

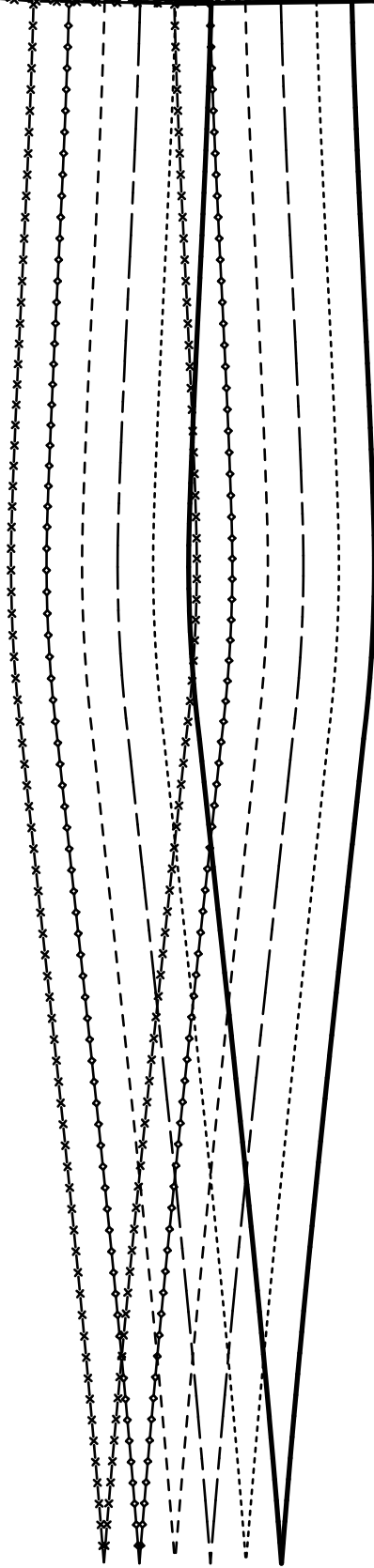
6.

Taille
waist
ТАЛИЯ

Reißverschluss
zipper
ЗАСТЕЖКА-МОЛНИЯ

4a

5a



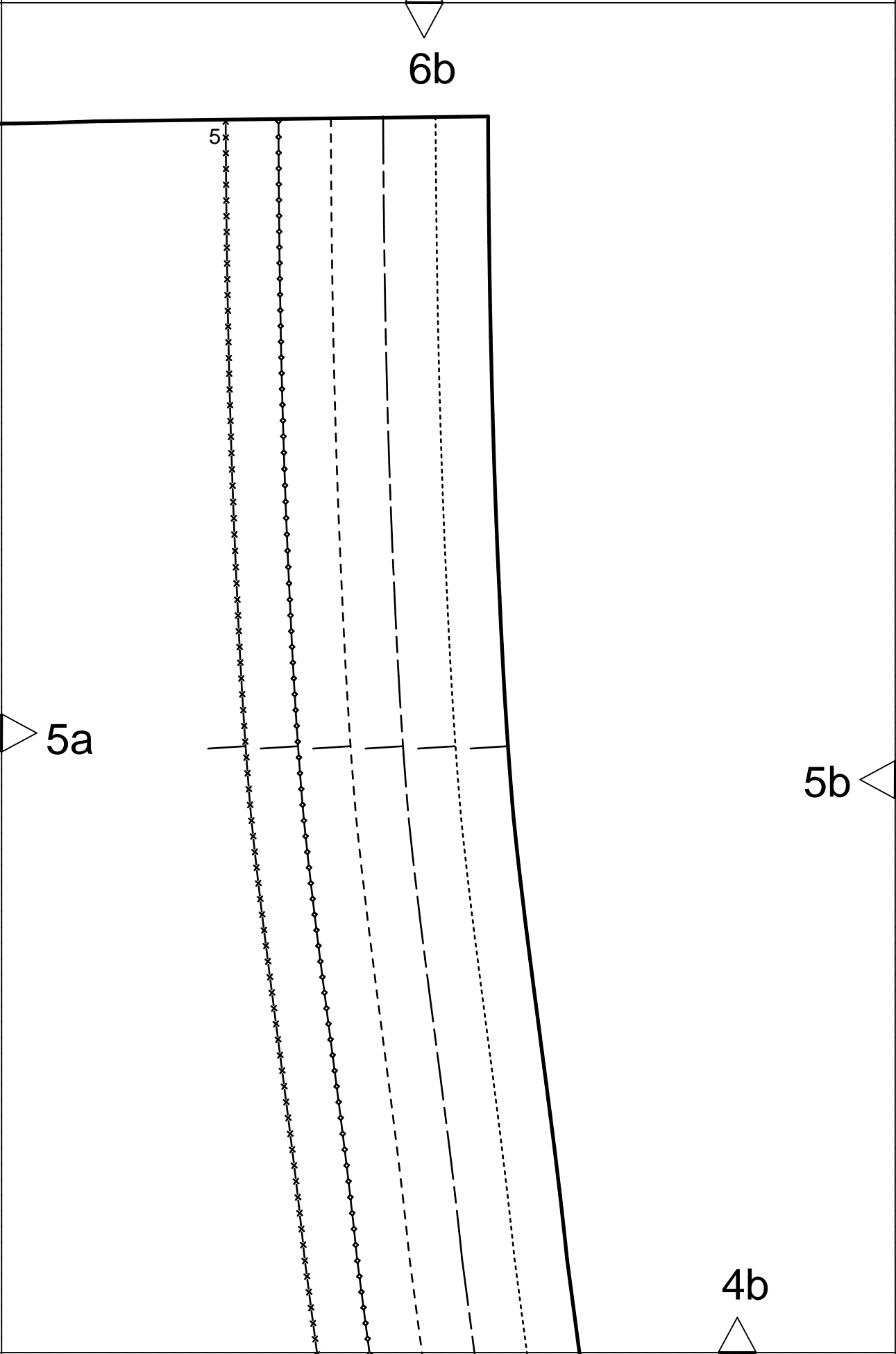
6b

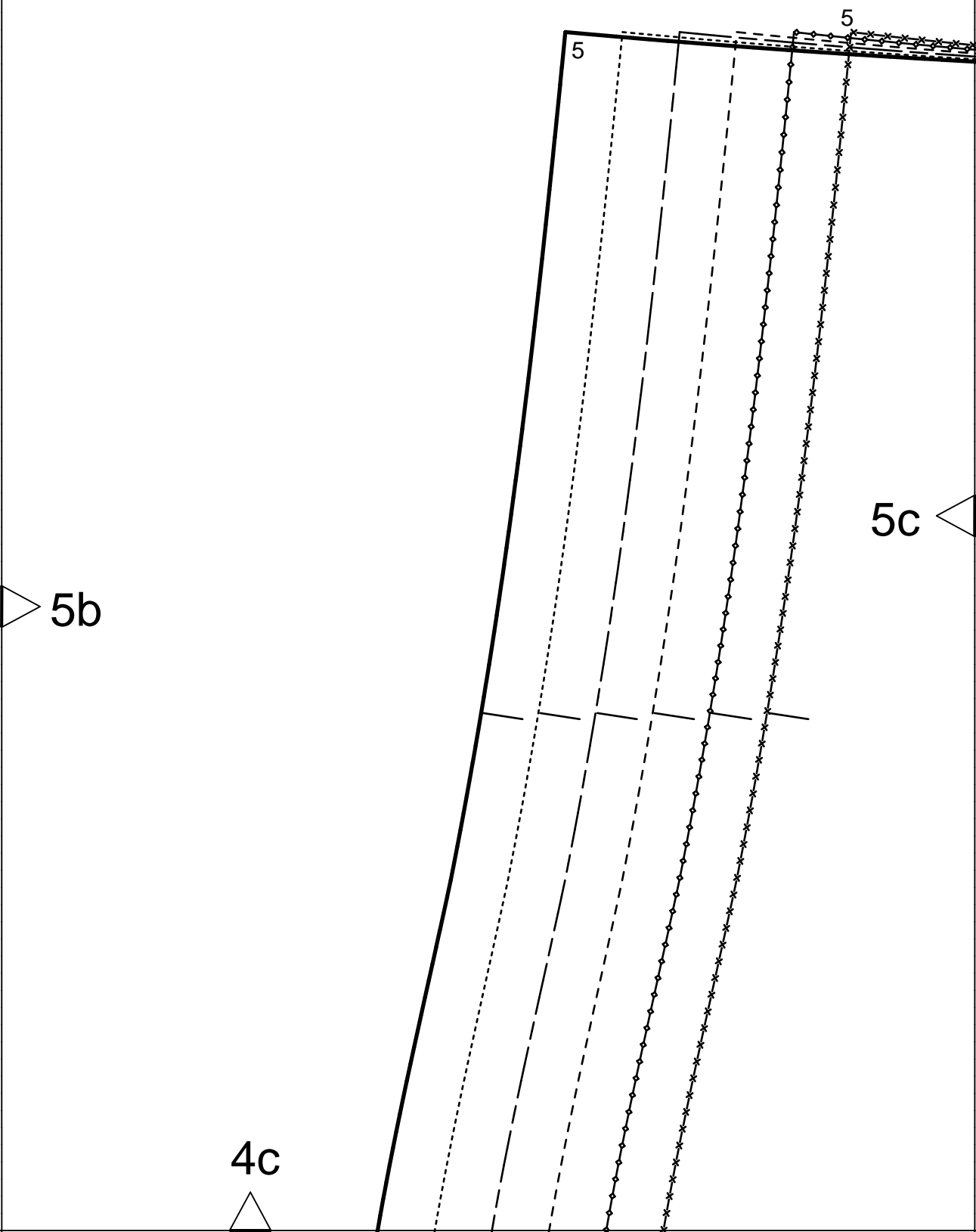
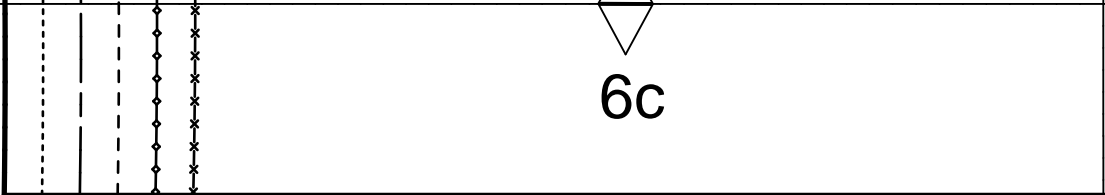
5

5a

5b

4b





rückwärtige Mitte Reißverschluss Fadenlauf
center back zipper straight grain
ЗАДНЯЯ СЕРЕДИНА МОЛНИЯ ДОЛГЕВАЯ НИТЬ

6d

6.

Blendenanstoß
band placement line
ЛИНИЯ СОВМЕЩЕНИЯ
ПЛАНКИ, БЕЙКИ, КАНТА


Taille
waist
ТАЛИЯ

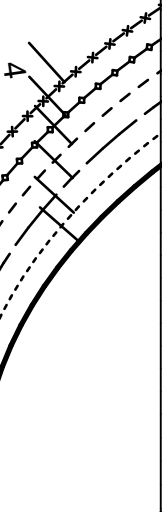
5c

4d

8a




Gummiring
elastische
KYLINCKA



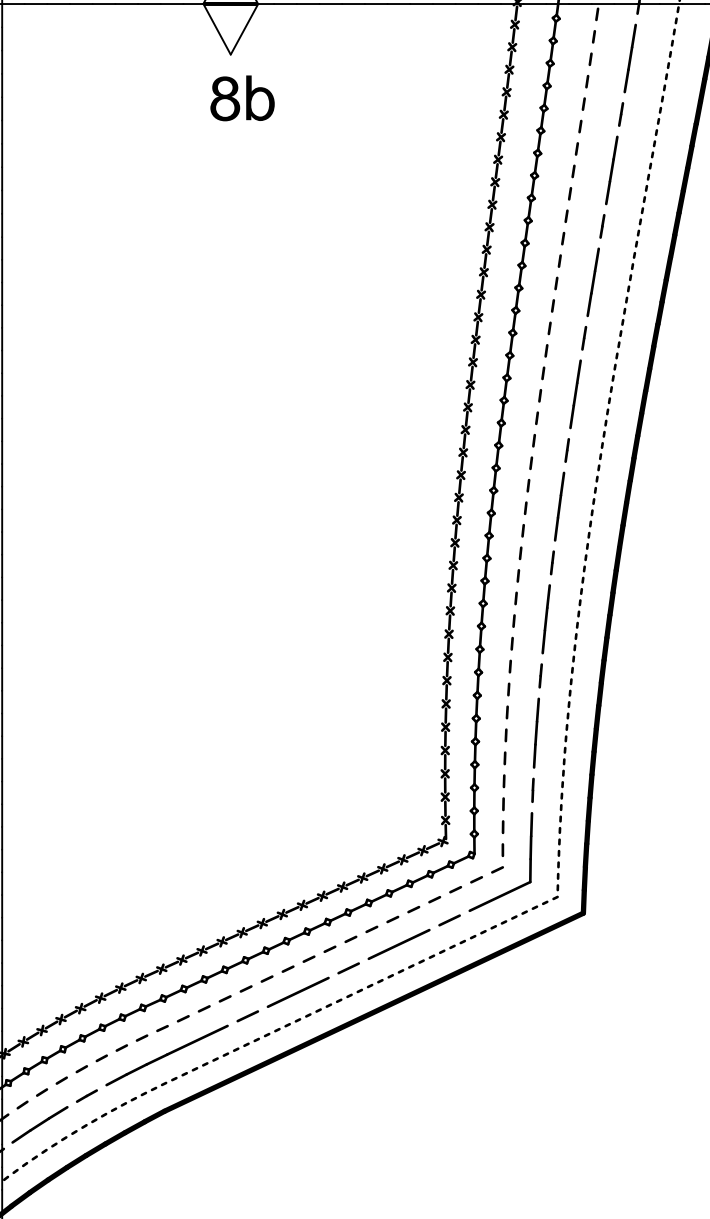
7a

6a

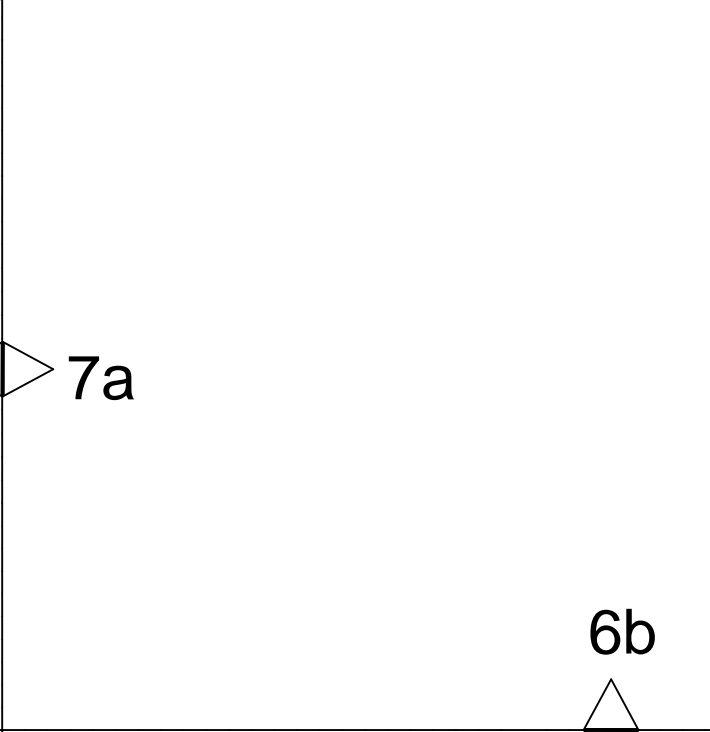


N

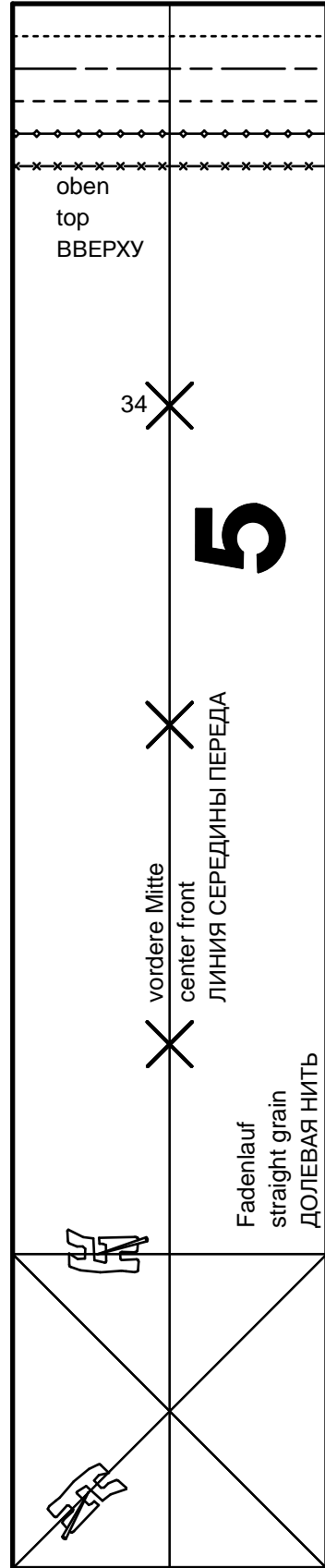
8b



7a



6b



7b

oben
top
ВВЕРХУ

34 X

5

X
vordere Mitte
center front
ЛИНИЯ СЕРЕДИНЫ ПЕРЕДА

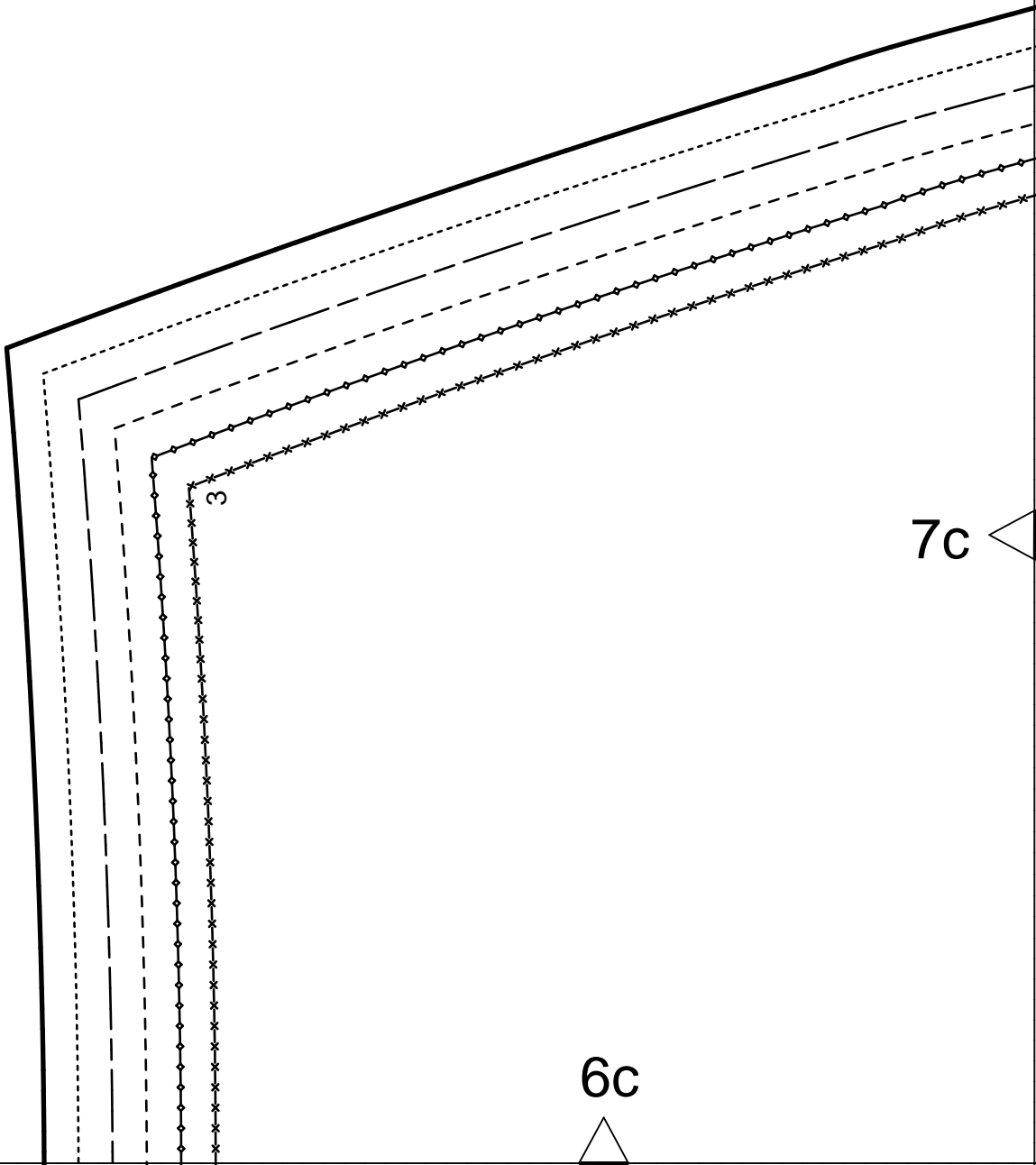
X
Fadenlauf
straight grain
ДОЛЕВАЯ НИТЬ



8c

7b

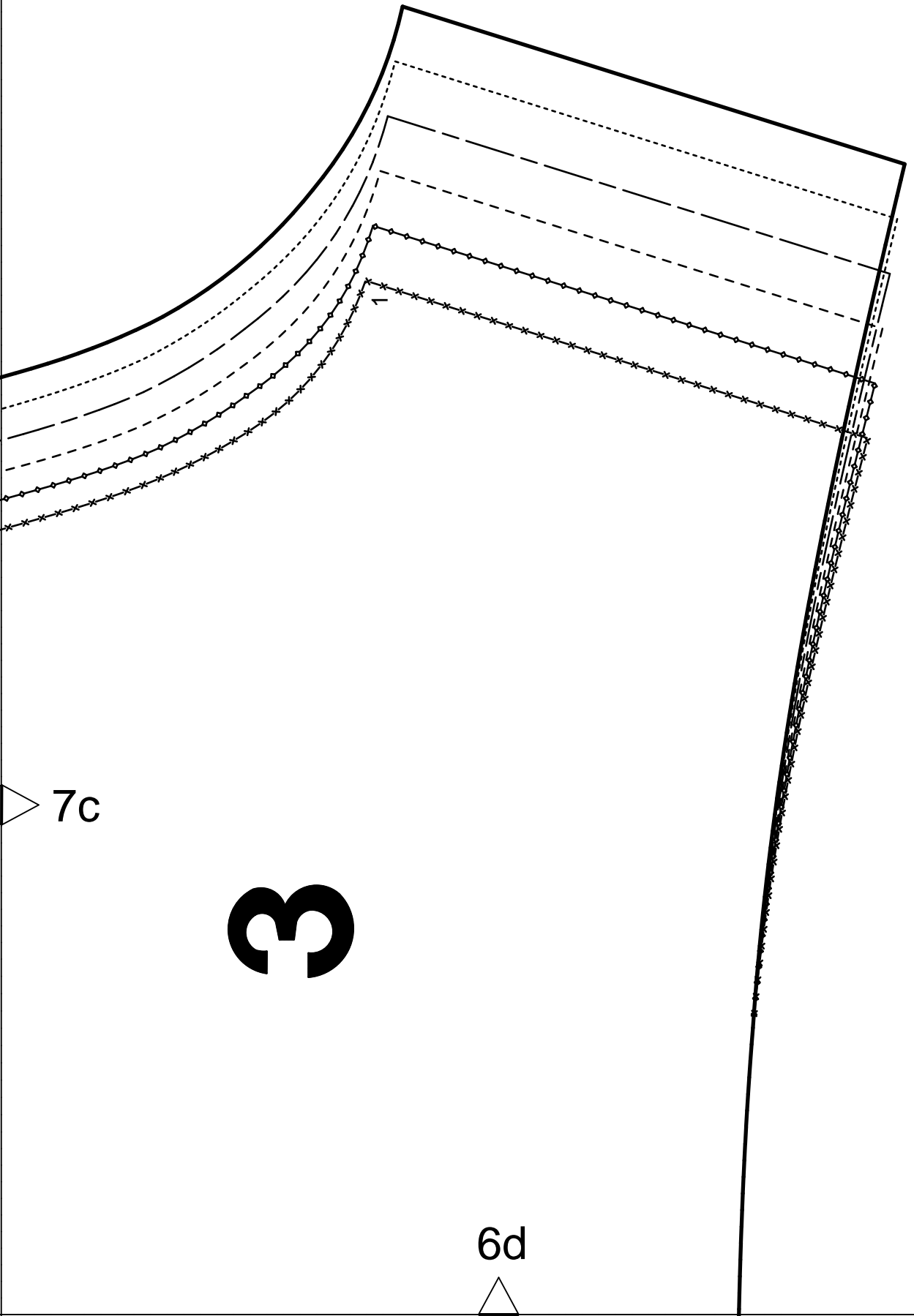
burda[®]
www.burdastyle.de



7c

6c

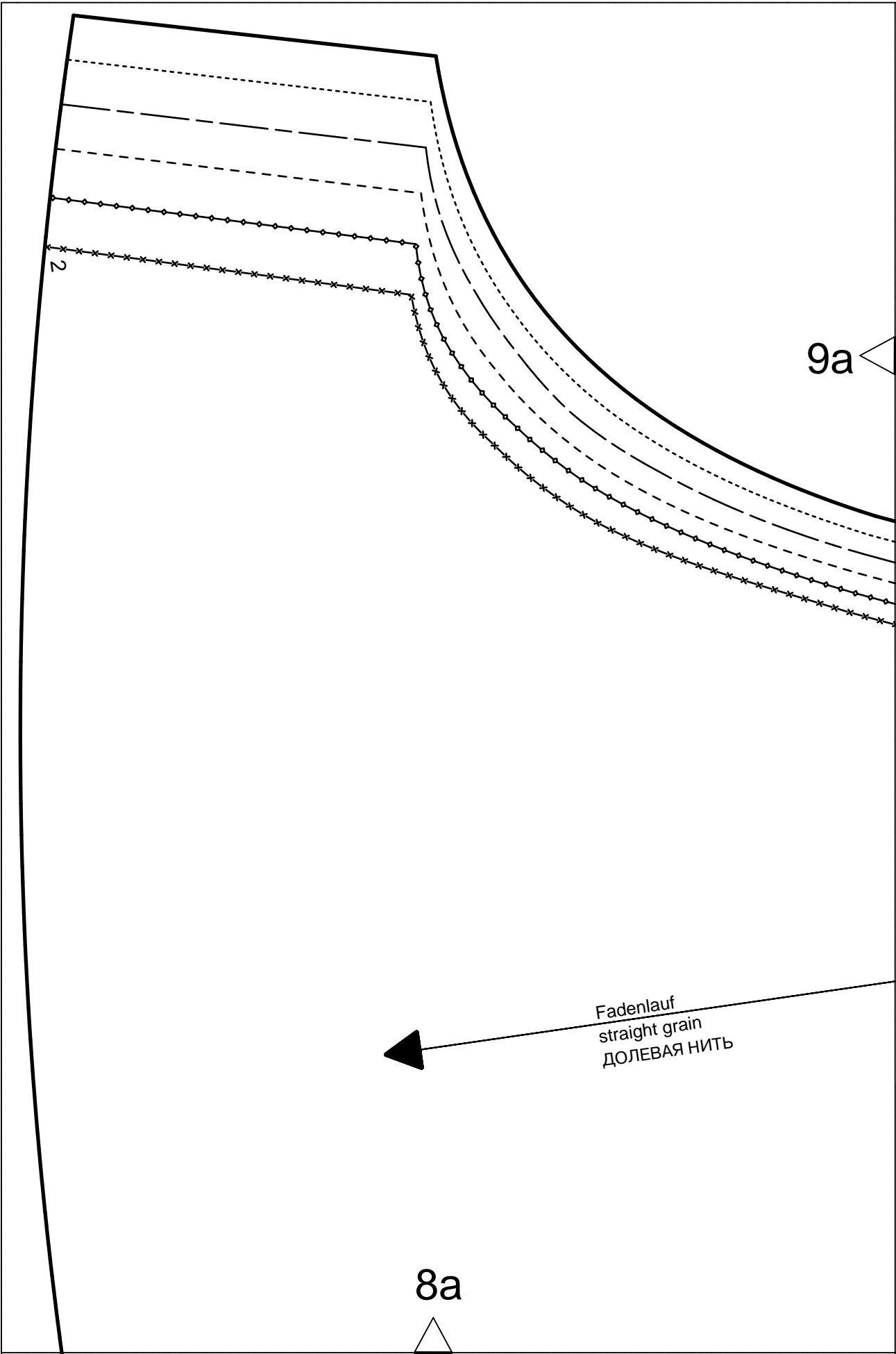
8d



7c

3

6d



9a

2

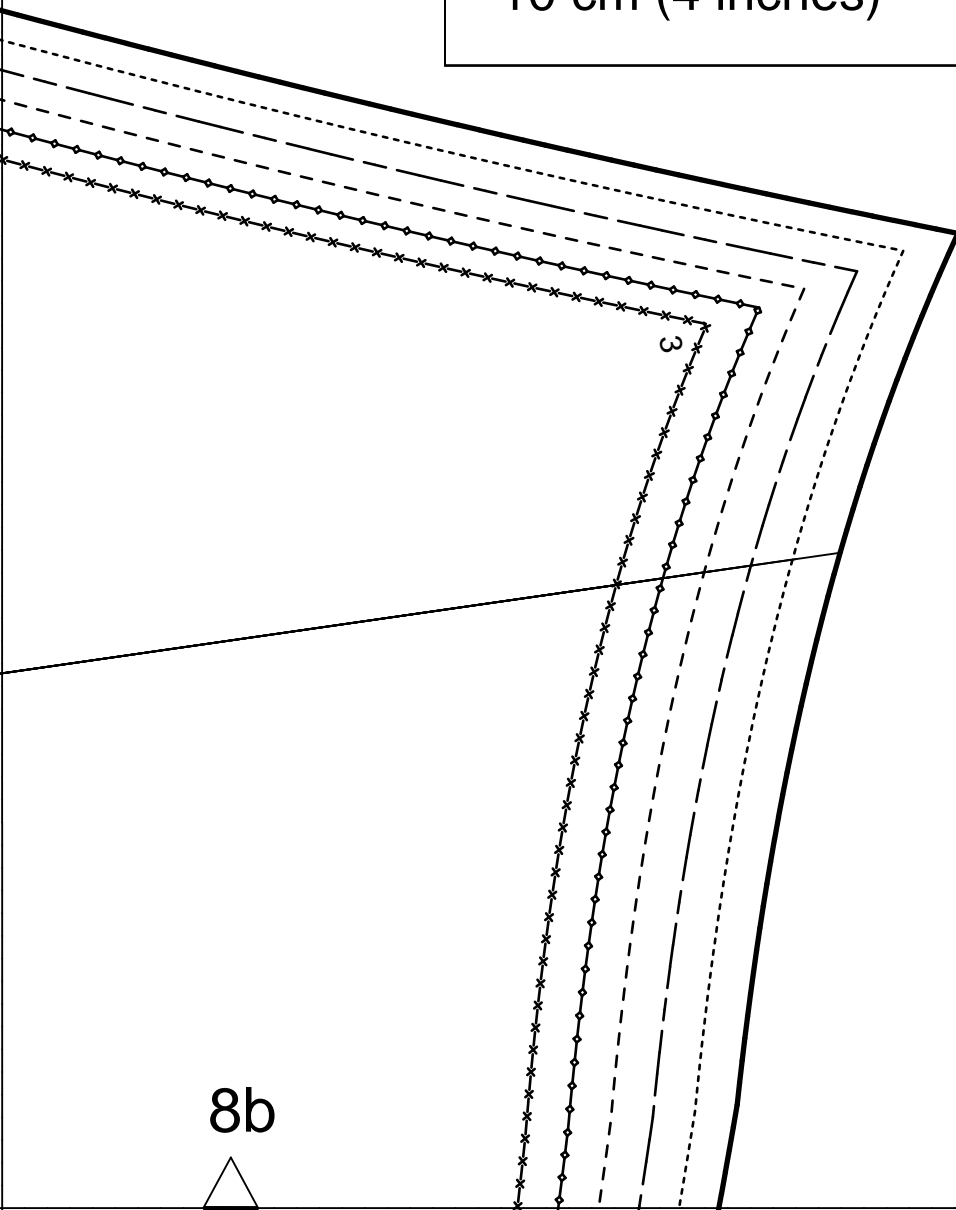
Fadenlauf
straight grain
ДОЛЕВАЯ НИТЬ

8a

9a

Kontrollquadrat / test square

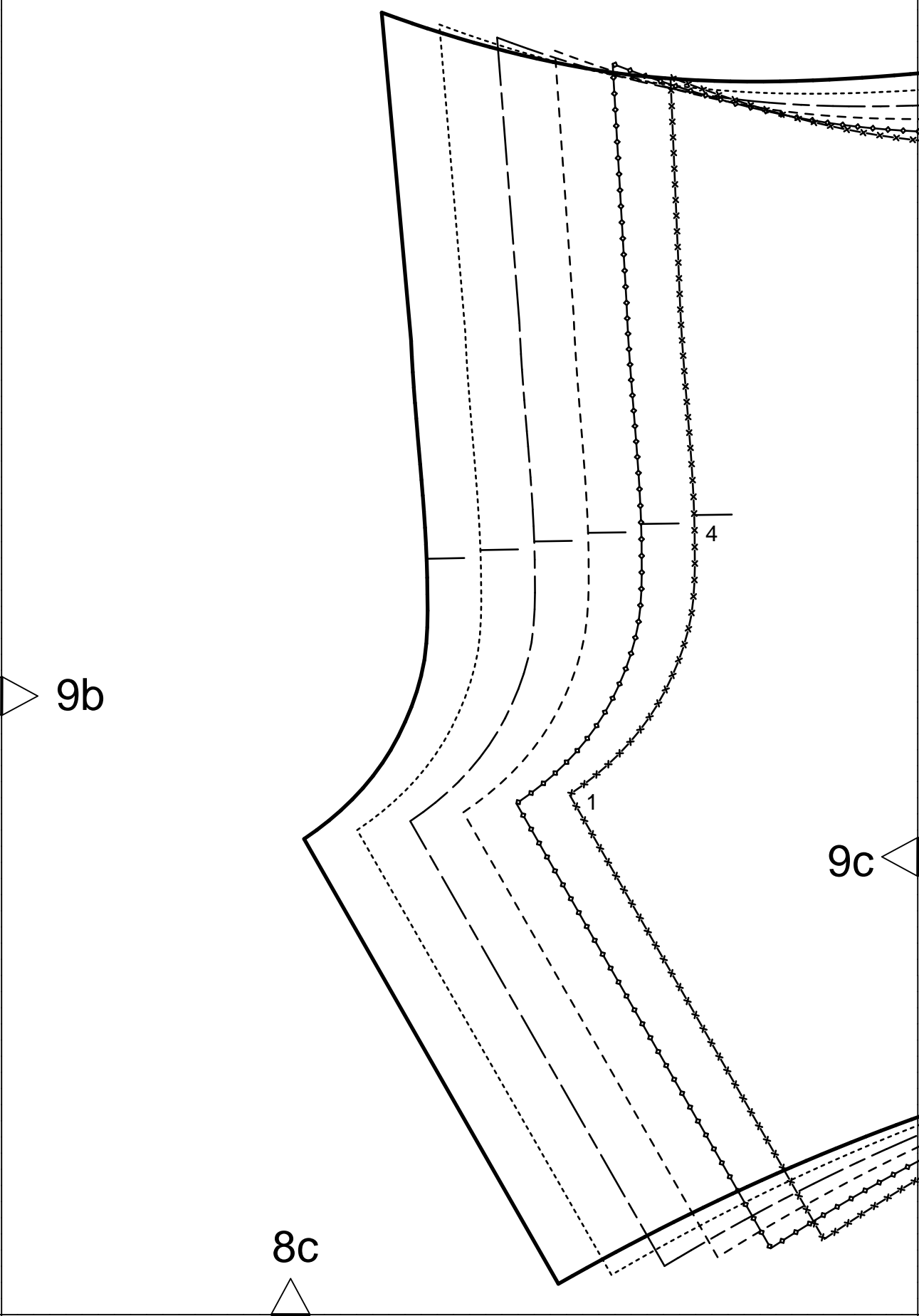
Seitenlänge / side length
10 cm (4 inches)



9b

8b





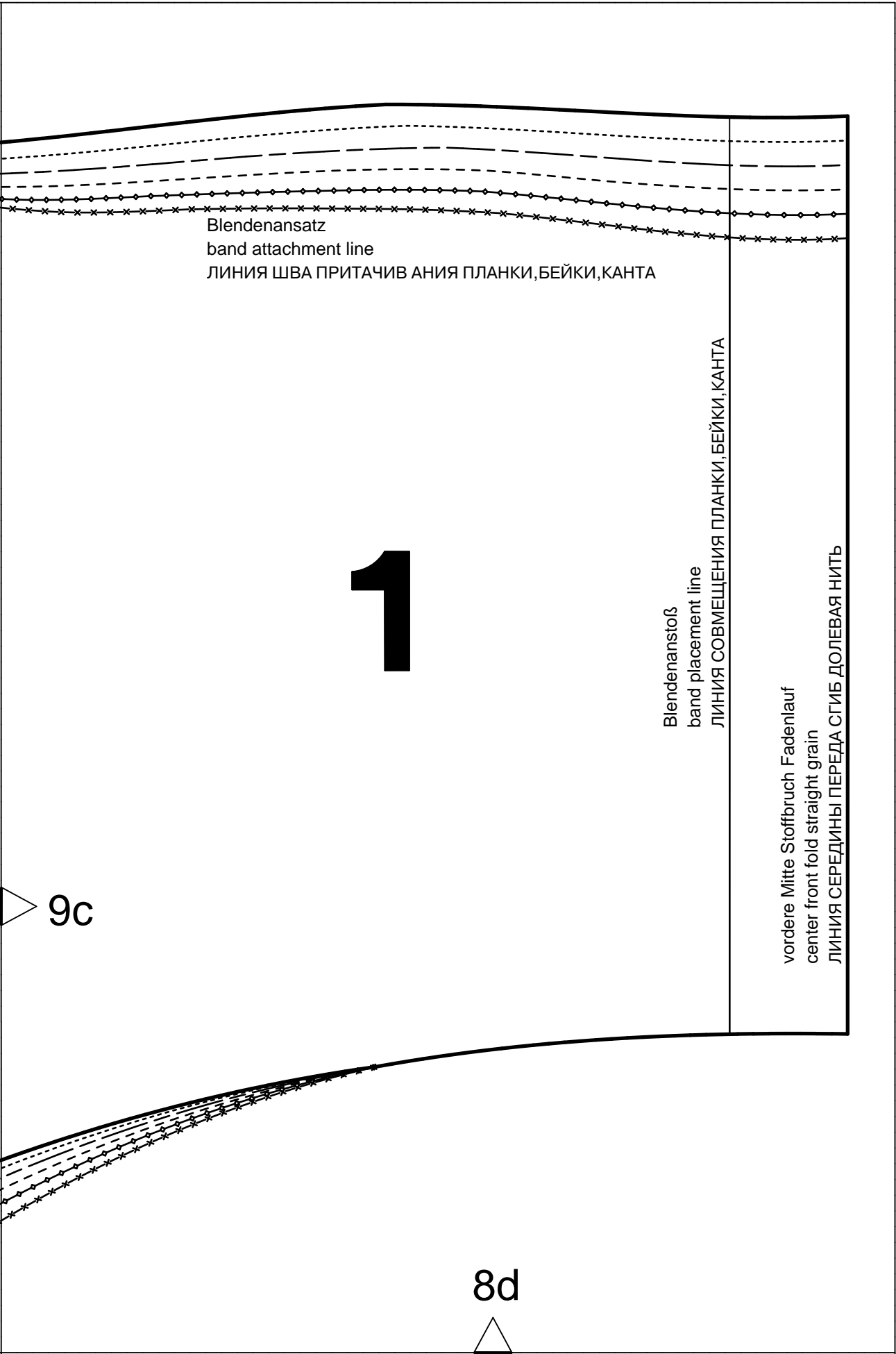
9b

9c

8c

4

1



Blendenansatz
band attachment line
ЛИНИЯ ШВА ПРИТАЧИВАНИЯ ПЛАНКИ, БЕЙКИ, КАНТА

1

Blendenanstoß
band placement line
ЛИНИЯ СОВМЕЩЕНИЯ ПЛАНКИ, БЕЙКИ, КАНТА

vordere Mitte Stoffbruch Fadenlauf
center front fold straight grain
ЛИНИЯ СЕРЕДИНЫ ПЕРЕДА СГИБ ДОЛЕВАЯ НИТЬ

9c

8d